



EH1688



**Over Door Heater & Fan
Chauffage de Porte & Ventilateur**

IMPORTANT


Installer and Users please note:

These instructions should be read carefully and left with the user of the product for future reference.

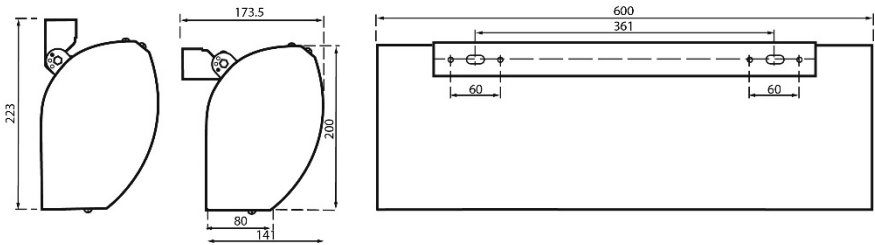
BEFORE USE

You must inspect the appliance including its cable for any signs of damage. If the product is damaged, DO NOT use it, and contact your supplier immediately.

PRODUCT SAFETY

- This appliance can be used by children aged from 8 years and persons with reduced physical, sensory or mental capabilities or lack of experience or knowledge provided that it has been placed or installed in its intended normal operating position and they have been given supervision or instruction concerning use of the appliance in a safe way and understand the hazards involved.
- **CAUTION: Some parts of this product can become very hot and cause burns. Particular attention has to be given where children and vulnerable people are present.**
- Children shall not play with the appliance.
- Cleaning and user maintenance shall not be made by children without supervision.
- Ensure that curtains are at least 900mm (3') from the top of the heater
- Leave a gap of at least 200mm (8") at the sides of the heater.
- Do not cover. This symbol shown on the casing of the heater means that the heater should not be covered. 
- For indoor use only.
- Do not use in bathrooms, or in wet or damp locations.
- Do not place the mains lead beneath a carpet or rug.
- Do not install immediately below a socket outlet.
- Do not use the heater in locations where paint, petrol or other flammable liquids are used or stored.
- Do not insert any object into the heater through the grilles. This may damage the heater or result in overheating or electric shock.
- This heater should be permanently fixed to a wall or ceiling and connected to a mains supply by a qualified electrician.
- If the supply cord is damaged, it must be replaced by the manufacturer, authorised service agent or similarly qualified persons in order to avoid a hazard.
- DO NOT use a standard 13A BS1363 plug with this unit.
- **WARNING:** This heater is not equipped with a device to control the room temperature. Do not use this heater in small rooms when they are occupied by persons not capable of leaving the room on their own, unless constant supervision is provided.

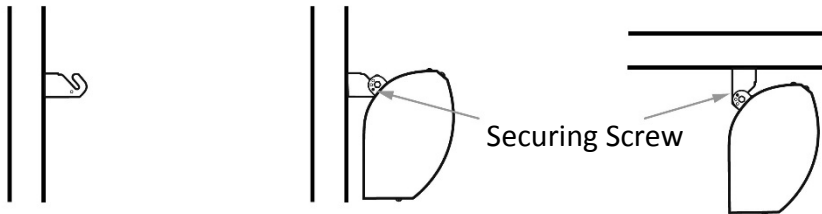
INSTALLATION



The EH1688 must be permanently fixed to a wall, door frame or ceiling and permanently connected to the mains supply by a qualified electrician to current approved wiring regulations. The unit can be fixed using bolts through the main holes or by four smaller screws on either side of the main holes. In any situation the unit needs to be installed in the correct way with the securing screws firmly in place.

To begin draw a horizontal line on the wall approx. 400mm long and mark the centre point. Mark 2 points 180.5mm either side of the centre point and then two points 30mm either side of the two main points. Drill either two holes either side of the main fixing points or two holes on the main points then insert the correct wall plugs or bolts.

The bracket can now be firmly fixed to the wall/ceiling.



Once the bracket is correctly fitted to the wall or ceiling the heater can be slotted onto the bracket and the bolts tightened into place. The 2 securing screws should be fitted to ensure the unit cannot be accidentally removed or knocked off.

The unit is supplied with a 3 function remote control, this will require the fitting of 2 AAA batteries for correct operation.

PAT TESTING

When used in a workplace, we recommend that this product should be safety-tested yearly by a qualified electrician (PAT Tested)

We recommend that it is PAT tested regularly when used in a domestic environment.

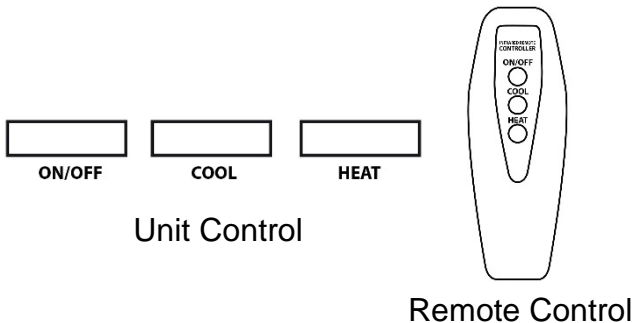
GENERAL SAFETY REQUIREMENTS

Domestic wiring must be tested periodically by a qualified electrician at least once every 10 years or at every change of occupancy.

For office and retail premises, and buildings such as village halls, the wiring must be inspected at least once every 5 years.

It is recommended that all buildings be fitted with smoke alarms (it is mandatory for new buildings).

OPERATION



Switch the unit on at the supply socket that will have been installed by the qualified electrician fitting the unit.

The unit can be operated via the control panel or by the supplied remote control.

Press the ON/OFF button on the remote control or on the main panel to turn the heater ON or OFF.

Press the HEAT button to turn heater and fan on, the unit will operate initially at low power (1.5kW). Press the HEAT button again to increase to high power (3kW).

The COOL button will leave the fan ON and turn the heater OFF.

OPERATING COSTS

At time of going to press, the average cost of electricity is £0.12 per unit (kilowatt-hour). The amount you are being charged will be shown on your electricity bill.

At this cost, the EH1688 will cost £0.36 per hour to run on the High heat setting, 18p per hour to run on the low heat setting and 1p per hour to run in COOL mode.

MAINTENANCE

Before cleaning, turn the heater off, and disconnect from the mains supply. The heater may then be cleaned using a damp cloth with a drop of washing-up liquid to remove any dust or dirt from the case. Do not use stronger detergents or solvents as these may damage the case finish.

FAULT-FINDING

The EH1688 has an overheat protection switch, which disconnects the power if the element gets too hot. The usual reason for this is because the air-flow has been obstructed, or the grilles have been blocked. If the heater ceases to operate, leave it for 20 minutes to cool down, then check that the grilles are not being obstructed.

Switch back on, and check that the unit is operating normally. If not, contact an authorised service agent for repair.

DISPOSAL AND RECYCLING

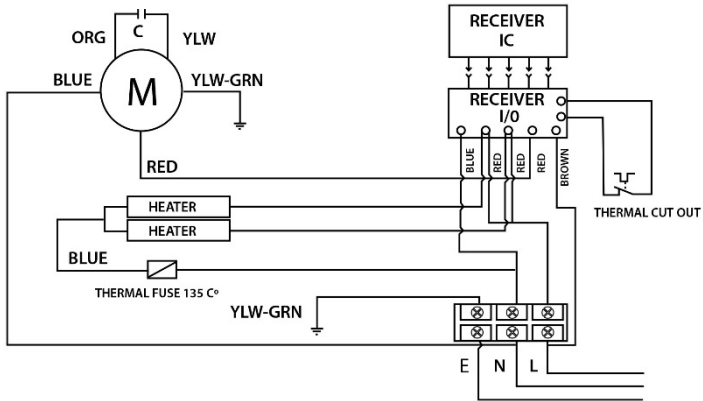
You must not dispose of this appliance with domestic household waste.

Most local authorities have specific collection system for appliances and disposal is free of charge to the end-user.

When replacing an existing appliance with a similar new appliance your retailer may take the old appliance for disposal.

TECHNICAL SPECIFICATION

Dimensions:	600×140×200 mm
Weight:	6.65 kg
Power supply:	230 V ~
Power consumption:	3.07 kW
Operating current:	13.3 A



Circuit

SERVICE WARRANTY

Prem-i-Air guarantees the product free from defects in materials and workmanship for a period of two years.

Should this unit be operated under conditions other than those recommended, at voltages other than the voltage indicated on the unit, or any attempts made to service or modify the unit, then the warranty will be rendered void.

The product you buy may sometimes differ slightly from illustrations. This warranty is in addition to, and does not affect, your statutory rights.

If you have any problems with this product, please call our Help Desk on (0845) 459 4816.

**Prem-i-Air Appliances Ltd.,
Lancots Lane,
Sutton,
St. Helens,
Merseyside.
WA9 3EX**

website: www.prem-i-air.com